



SHREE LASER SYSTEMS

MANUFACTURERS OF LASER MARKING, WELDING & CUTTING MACHINES



FIBRE LASER CUTTING MACHINE



Laser Power - 1kW to 3kW
Thickness - 0.5mm to 16mm
Material - MS, SS, Brass, Al, Cu, Ti.

EASY FEEDING SYSTEM



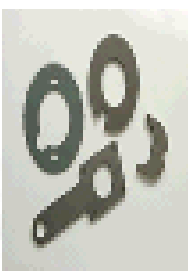
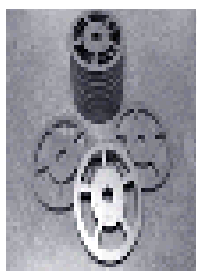
- Decoration industry
- Lighting industry
- Advertising industry
- Sheet metal processing
- Automobile industry
- Fitness equipment
- Kitchenware industry
- Home appliance industry



CONTROL PANEL OF HANDLE



WORKING TABLE

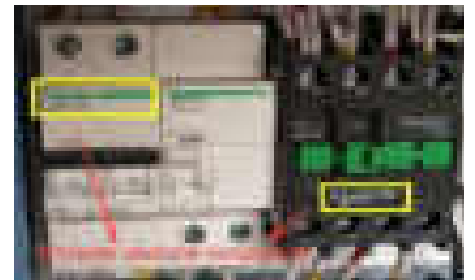


SPECIFICATION

Parameters	Standard Specification SLS-3015/4020
Working Area	1500*3000mm / 2000*4000mm
Laser Power	500W / 750W / 1000W / 1500W / 3000W Fiber Laser Generator
Wave length	1064nm
Control System	CYPCUT Control Systems
Cutting Speed	0-35m/Min (Depending on Material & Thickness)
Positioning Accuracy	+/- 0.02mm
Repositioning Accuracy	+/-0.01mm
Equipment Power	Upto 32 KW
Water Cooling System	Constant Temperature Water Chiller
Power Supply	1-Phase upto 1.5KW, 3-Phase 380V / 50Hz
Graphic Format Supported	ai, dxf, plt
Cutting Thickness	0.5-16 mm (Different Material Different Thickness)
Servo Motor & Driver	Yaskawa Motor & Driver + Japan or Equivalent
Location System	Red Dot Indicator
Running Environment	Temperature : 0°C ~45°C



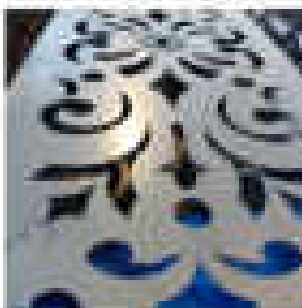
HIGH SOFT SHEIDED CABLE AND CHAIN



ELECTRICAL COMPONENT



CONTROL SYSTEMS



FIBRE LASER WELDING



CNC Laser Machine



Water cooled Laser Welding Machine



Air cooled Laser Welding Machine

Key Specifications/Special Features:

Main Features

- 1) The hand-held welding gun head is flexible and convenient for outdoor welding.
- 2) The operating mode of the hand-held welding tip allows the workpiece to be welded at any angle anywhere.
- 3) Intelligent switching of dual light paths, evenly distributing energy according to different time and different light.
- 4) Suitable for all kinds of complicated welding methods and spot welding of various equipment.
- 5) The operation is simple, it can be welded at the beginning, and it is not necessary to cost a large amount of money to weld the master.
- 6) No welding station is required, the space is small, the welding products are diversified, and the product shape is flexible.
- 7) Low material costs, low energy consumption and low maintenance costs

Laser Power - 1kW to 2kW
 Thickness - 0.5mm to 6mm
 Material - MS, SS, Brass, Al, Cu, Ti.

Equipment	Water cooled Handheld Laser Welding Machine	Air cooled Handheld Laser Welding Machine
Laser Power	1000W/ 1500W/2000W	1000W / 1500W / 2000W
Laser wave length	960 to 1070 NM	1070 Nm
Fiber Length	Standard 10m, Max 15m	15m, other length available upon request
Working Method	Cotinuou/Pulsed	Continuous / Pulsed
Welding Speed	0~120 mm/s	0~120 mm/s
Cooling Method	Intelligent water chiller	Air cooled
Working Environment	15~35 °C Humidity < 70% no condensation	10-50°C 5 - 55°C
Welding Thickness	0.5-6mm	0.5 - 6 mm
Welding Seam	≤0.5mm to 4 mm	≤0.5mm to 4 mm
Working Power	220V	220V



UV & Co2 LASER MACHINE



Co2 Laser Cutting & Engraving Machine



Co2 Laser Machine



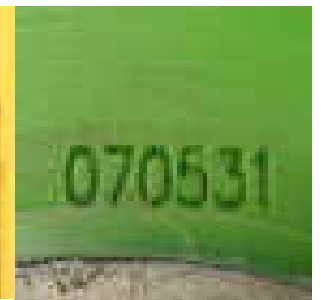
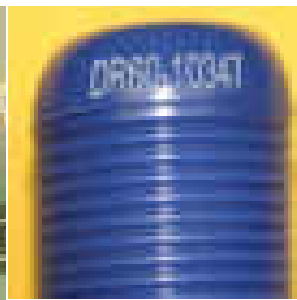
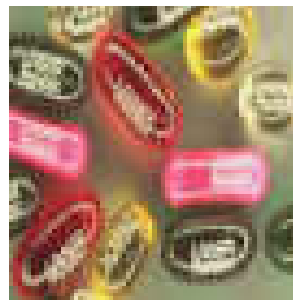
Model:- SLUV-3 / 5 / 10

Co2 Laser Machine application-

Material can be marked Plastics, Glass, Ceramic, Rubber

TYPE	CUTTING AND ENGRAVING
LASER POWER (W)	60 (80,100,120W OPTIONAL)
AUTOMATIC GRADE	AUTOMATIC
DRIVEN TYPE	ELECTRIC
GRAPHIC FORMAT	AI,DXF,BMP,JPG,PLT,DST,ETC..
COOLING METHOD	WATER
WORKING AREA (mm)	600x900, 1200 X 900, 1400 x 900, 2500 x 1200

Laser power: 30 W / 55 W (Air Cooled)
 100 W / 150 W / 180 W / 300 W (optional) Water Cooled
 •Marking/ engraving area:300*300mm / 600*600mm /
 1000*1000mm / 1200*1200 mm .
 •Marking speed: upto 15000mm/s
 depends on material and result .
 •Min.line width: 0.1mm
 •Min.character: 0.6mm
 Power supplier: 220-230V AC



FIBRE LASER MARKING MACHINE



Desktop Model- SLFM



Split Model- SLFM



Hand Held Marking Machine

Laser Details	SLFM-20	SLFM-30	SLFM-50
Laser	Fiber Laser	Fiber Laser	Fiber Laser
Laser Power	20 Watt	30 Watt	50 Watt
Power Tenability	10-100%	10-100%	10-100%
Marking Range	150 * 150 mm	200 * 200 mm	150 * 150mm 200 * 200mm 300 * 300mm optional
Range	660 ns	660 ns	660 ns
Marking Depth	0.05 to 0.8mm depend upon Material & Field Size)	0.05 to 1.0mm depend upon Material & Field Size	0.05 to 1.5mm depend upon Material & Field Size
Operating Temperature	0-40 C	0-40 C	0-40 C
Marking Speed	Max. 10000 mm/s (liner Speed)	Max. 10000 mm/s (liner Speed)	Max. 10000 mm/s (liner Speed)
Character Marking speed	100-300 Character / Second	100-300 Character / Second	100-300 Character / Second
Operating Power	230 V (single Phase)	230 V (single Phase)	230 V (single Phase)
Power Stability	> 95 %	> 95 %	> 95 %
Cooling System	Air cooling	Air cooling	Air cooling
Graphic Format	AI , DXF, BMP, JPG, PLT , DST, SVG, ETC		



Customise Laser Machines



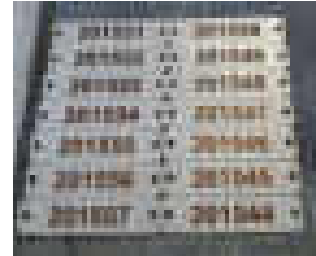
Customise Fiber laser machine with rotary system

Application

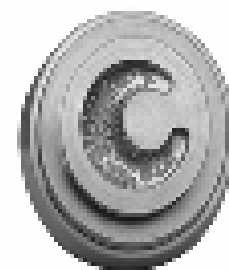
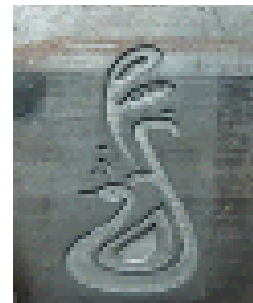
- Aerospace
- Automotive
- Jewellery
- Medical
- Batteries
- Utensile's
- Electronics
- E-Mobility
- Solar
- Dental

Fiber Laser Common Application

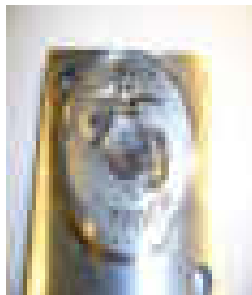
- Mark & Engrave: All Metals
- Mark & Engrave: Some Plastic
- Mark : Some Stones
- Mark : Some Leathers
- Mark : Some Paper
- Mark : Some Garments



Barcode, QR code & Serial Number Marking



Fly Mark fiber laser machine



FIBRE LASER GOLD CUTTING MACHINE

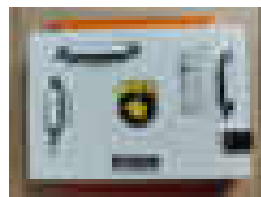
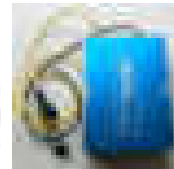
Model	SLFM-60	SLFM-80	SLFM-100
Laser	FIBER LASER	FIBER LASER	FIBER LASER
Laser Power	60 WATT	80 WATT	100 WATT
Power Tenability	1-100%	1-100%	1-100%
Working	(Customised Cutting	Size Upto 600mm*	Size Upto 600mm*
Inbuilt Guide Laser	660 ns	660 ns	660 ns
Engraving Depth	0.01 to 1.5 mm	(depend upon	(depend upon
	(depend upon	Material & Field Size)	Material & Field Size)
	Material & Field Size)		
Operating Temperature	0-40 C	0-40 C	0-40 C
Marking Speed	Max.1000 mm/s	Max.1000 mm/s	Max.1000 mm/s
	(Liner Speed)	(Liner Speed)	(Liner Speed)
Operating Power	230 V (Single Phase)	230 V (Single Phase)	230 V (Single Phase)
Cooling System	Air Cooling	Air Cooling	Air Cooling



3D Engraving / Gold Cutting machine



SPARES



Hand held fiber laser marking machine

Address :

Shree Laser Systems

Gala no:2, Deevan & Sons Industrial Estate No:7, Navghar Road, Vasai East - 401210

Phone - 9594686749

www.shreelasersystems.in

www.shreelasersystems.co

E-Mail - shreelasers@gmail.com